

INTELLIGENT ENTERPRISE CLOUD DISTRIBUTED SYSTEMS FOR NEXT-GENERATION DATA ENGINEERING

Hardik Patel

Independent Researcher, USA

Manteca, California

join.hardikpatel@gmail.com

Abstract

Modern business requires cloud-oriented architectures arduous to support extremely huge, heterogeneous, and dynamically dynamic data engineering loads with dependability, savvy, and government consciousness. Traditional architectures are mainly based on the principle of scalability and throughput but fail to autonomously scale to the volatility of workloads, multi-cloud heterogeneity and real-time decision-focused computing. This paper provides a smart enterprise cloud distributed architecture that combines AI-based coordination, policy-based resource placement, workload scheduling based on behavioral dynamics and self-resilience, and self-protect. It is an architecture that relies on predictive analytics to predict the changes in demand, context-aware controllers to coordinate compute, storage, and network, and self-healing to reduce the inconvenience of the service. Data intelligence layer also improves tracking of the lineage, quality as well as preserving compliance within dispersed settings. The system also enhances secure multi-tenant execution, latency-sensitive data pipelines, and learning-based optimization, which improves with the working conditions. The suggested paradigm develops a structurally unified base of next-generation data engineering, which allows consistent performance, effective use, and reliable governance of scattered enterprise clouds. This policy-oriented, future-oriented and intelligent ecosystem responds to the new requirements of a real-time analytics, mission-critical application, and future enterprise innovation, positioning the framework as a healthy guide to sustainable large scale cloud data engineering.

Keywords: Intelligent Cloud Systems, Distributed Enterprise Computing, Data Engineering Pipelines, AI-Driven Orchestration, Adaptive Workload Management, Policy-Aware Resource Allocation, Real-Time Analytics, Multi-Cloud Governance.

1. INTRODUCTION

The accelerated development of digital businesses has increased the reliance on large-scale distributed clouds where data are produced, processed, and intelligently used continuously through geographically distributed infrastructure [1]. The current-day organization is working in an environment that is saturated with fast, accelerating data movements, sophisticated analytics loads, diverse environments, and overarching demands of stringent administration. Conventional centralized or fixed architecture clouds are increasingly becoming inadequate as the enterprise ecosystems require greater intelligence, flexibility, reliability and contextual awareness to handle the data engineering process [2]. This is further reinforced by the growing dynamism of Artificial Intelligence (AI), Internet of Things (IoT), edge-cloud continuum, and real-time analytics architecture that demands more than just scales on the part of enterprise

cloud distributed systems to continuously adjust them dynamically to various conditions of operation.

The current cloud-based computing and data engineering designs put a lot of emphasis on the infrastructure scalability and optimal throughput. Yet, they frequently find it difficult to deal with adaptive workload orchestration, policy-based governance, dynamic multi-cloud resources optimization, and resiliency of mission-critical enterprise settings [3]. The ever-evolving workload nature, shifting resource needs, growing insecurity demands and requirement of reliable data lineage are complex with serious complications. These complexities make it necessary to have smarter, governance compliant and evolution operating distributed system model that provides strategic enterprise change and operational resilience. The Figure 1 demonstrates the main benefits of cloud distributed systems that are scaled and flexible, which is orchestrated by AI and automated to operate efficiently [4]. It demonstrates real-time data processing, better data quality and data lineage management, better utilization of multi-cloud resources, good security and compliance support, and robust self-healing infrastructure, which can be used to provide reliable, intelligent, and future-active enterprise data engineering environments.

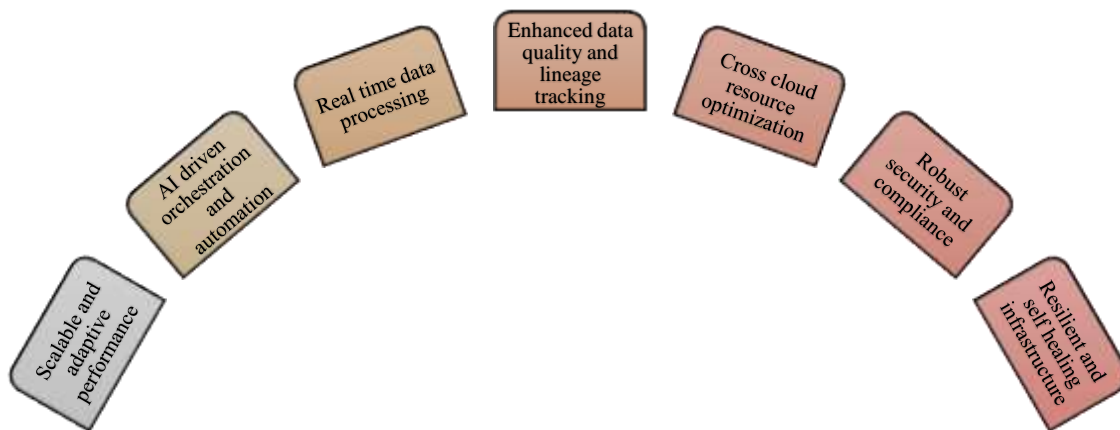


Figure 1: Advantages of Cloud Distributed Systems for Next-Generation Data Engineering

Enterprise data engineering spaces now must be available to structured and unstructured data, real-time pipelines, latency-sensitive applications, and analytics-driven decision processes, at the same time. Also, organizations should maintain data quality, privacy adherence, interoperability, and cost reduction without affecting the performance of the system. The introduction of distributed AI, federated learning, hybrid cloud ecosystems, and context-aware computing also demand that clouds systems be developed to incorporate intelligence on their orchestration level, and not provided as elastic infrastructure platforms [5-6]. This therefore necessitates the imperative of imagining advanced generation enterprise hierarchical cloud distributed systems that harmonize intelligent management, adjustive control, governance assurance, and perpetual learning features in coherent vision of an architecture.

Objectives

The main aims of the present study are:

- 🚦 To investigate the emerging needs of intelligent enterprise cloud distributed settings in supporting massive data engineering environments.

- ✚ To institute the need to incorporate AI-informed decision intelligence, dynamic orchestration, and policy-conscious automation into cloud-distributed systems.
- ✚ To conceptualize an architectural direction, fluidity of workload, governance consistency, resilience, and enterprise preparedness in complex distributed environments.
- ✚ United intelligence layers: To highlight the importance of single intelligence layers in enhancing the data quality, lineage assurance, and compliance management across the distributed enterprise information streams.

Motivation

The need to investigate this research is because the complexity in enterprise digital mockups is growing so that conventional cloud architectures are now too weak to maintain intelligent data-based operations. The increasing importance of real-time analytics, business processes which are mission critical, data that is regulatory compliant, autonomously optimizing, and autonomously adjusting systems reflects the demand of intelligent, adaptive, and policy-aligned distributed systems [7]. In addition, the worldwide trend of intelligent and autonomous business infrastructure supports the necessity of creating cloud systems that adapt together with the organization requirements, technological trends and business pressures.

Overall, the evolution of enterprise computing requires a reconstruction of distributed cloud-based systems design, which will move on the level of scalable infrastructure to the level of intelligent, adaptive, resilient, and governance-organized environments [8]. The development of these intelligent enterprise cloud distributed systems is critical to make possible sustainable, reliable, and future-adaptable and data engineering capabilities that will select next-generation enterprise innovation and strategic growth.

2. LITERATURE SURVEY

The Real time growth of enterprise scale data ecosystems has set a pressure on the research focus on cloud distributed systems that enable next generation data engineering. Previously the focus in research was on the horizontal scalability and management of virtualized infrastructure. But the literature has been recently moving on to intelligent orchestration, autonomous resource optimization, hybrid multi-cloud platforms, data-governance integration, and security-aware computation [9]. There has been an increased focus on workload management, real-time processing, and resistance to dynamic operational changes using AI by researchers. Modern literature focuses on the area of interoperability of heterogeneous clouds, cost-conscious scheduling, collaboration between edges and clouds, and policy-based automation also. This survey is a synthesis of the work which has been done in such topics and examines ongoing limitations on which further understanding of smart enterprise cloud distributed systems will be encouraged.

The table 1 presents key research work regarding cloud-distributed systems and enterprise data engineering. It provides comparisons of contributions along such dimensions as area of interest, methodology, major findings, and limitations that would be identified [10]. According to the survey, there has been great advancement in terms of performance optimization, real-time analytics, and automation, however, there are still gaps that exist in terms of unified intelligence layers, governance alignment, holistic enterprise response, and self-adapting orchestrating abilities.

Table 1: Comparative Literature Survey on Cloud-Distributed Systems and Intelligent Data Engineering Frameworks

Focus Area	Techniques	Key Contribution	Limitation
Cloud resource scheduling	Heuristic-based schedulers [11]	Improved VM allocation efficiency	Limited intelligence and adaptability
Big data on cloud	Hadoop–Spark hybrid model	Enhanced batch and stream handling	No governance or policy mechanisms [12]
Multi-cloud management	Broker-based resource orchestration	Cross-cloud workload distribution [13]	High control plane latency
Intelligent cloud systems [14]	Reinforcement learning controllers	Adaptive resource tuning	Lacks data lineage integration
Edge–cloud collaboration	Fog computing frameworks	Reduced latency for IoT analytics	Limited enterprise-scale validation [15]
Security in cloud	Attribute-based encryption [16]	Better confidentiality guarantees	Overhead for real-time workloads
Data engineering pipelines	Stream-processing architecture	Real-time ingestion and transformation [17]	Weak self-healing capabilities
Federated data processing [18]	Federated learning	Privacy-preserving distributed analytics	Communication cost remains high
Resilient systems	Fault-tolerant middleware	Reduced service downtime	Limited AI-driven adaptation [19]
Cloud governance	Policy-aware orchestration layer [20]	Compliance-aligned workload control	Limited automation depth
Cost optimization	Auto-scaling with predictive models	Lower operational expenditure	Focused only on compute layer [21]
Data quality management	Metadata-driven validation tools [22]	Improved data lineage tracking	Not integrated with orchestration
Intelligent workload placement	Deep learning models	Better performance prediction	Training overhead and drift issues [23]
Hybrid cloud integration	Service mesh architecture [24]	Improved interoperability and routing	Security policy complexity
Self-healing infrastructures	Autonomous monitoring and repair	Reduced MTTR in cloud systems [24]	Limited holistic enterprise context

The literature review indicates that cloud-distributed computing, real-time data processing models, and AI-enabled resource management are developed seriously. Nevertheless, most of the works focus on the separated elements like scheduling, security, or cost minimization but do not introduce the overall enterprise-wide intelligent ecosystem [25]. Research gaps that are identified are aligned governance, self-learning capabilities, holistic data insights, scale resiliency, and cross-layer orchestration. These shortcomings warrant the further research in intelligent enterprise cloud distributed systems that will be next-generation specific to data engineering environment.

3. PROPOSED METHODOLOGY

The suggested approach model conceptualizes a smart enterprise cloud distributed system integrating AI-based orchestration, workload management that is adaptive to its behavior, governance-conscious control, and autonomous resilience within a unified architecture model. The framework is designed based on several related functional layers that do not work without each other. The main idea here is that scalability alone cannot be effectively maintained over time by data engineering processes, but rather they need to be underpinned by intelligent policy-driven decision processes embedded within the infrastructure fabric.

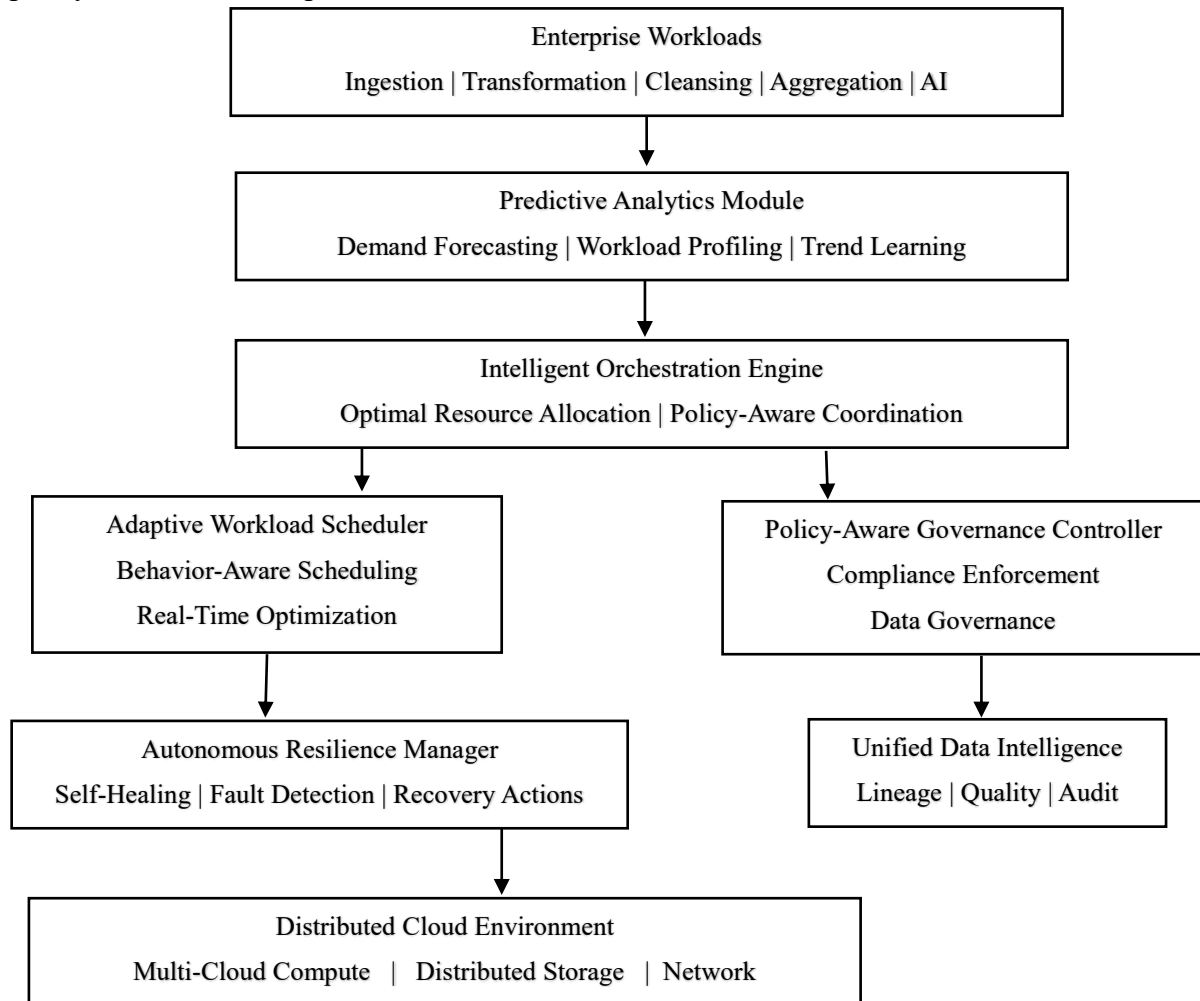


Figure 2: Illustration of proposed Intelligent Enterprise Cloud Distributed Architecture

The Figure 2 displays a hierarchical model in which the enterprise workloads are directed into a predictive analytics layer to facilitate smart coordination of resources. Adaptive scheduling is a way to run things dynamically and policy-aware governance is which makes sure they are run. Altogether data intelligence upholds chainage and excellence. Independent durability promotes self-healing processing resulting in effective execution in a well-rounded distributed cloud landscape, facilitating scalable next-generation data engineering.

The core of the system presupposes a multi-cloud distributed environment, which is a set of heterogeneous compute, storage, and network resources operating on the one hand in a public, on the other hand in a private, and a hybrid platform. Assume that the total number of available computing nodes is denoted as.

$$N = \{n_1, n_2, \dots, n_k\} \quad (1)$$

Here n_i represents a compute-storage integrated node. The computing power C_i , memory capacity M_i , storage S_i , and network bandwidth B_i are used to describe the resource capacity of every node. It is possible to formulate these as a resource vector.

$$R_i = (C_i, M_i, S_i, B_i) \quad (2)$$

The overall infrastructure space can be thus represented as.

$$R = \bigcup_{i=1}^k R_i \quad (3)$$

The cumulative workload that comes into the system is comprised of various data engineering operations, involving ingestion, transformation, feature engineering, cleansing, aggregation, and analytics preparation operations. Define the set of workloads to be as

$$W = \{w_1, w_2, \dots, w_m\} \quad (4)$$

Each workload has the characteristics of an estimated computational intensity α_j , memory requirement β_j , I/O requirement γ_j , latency sensitivity λ_j , and policy requirement π_j . These are integrated to form a work-load descriptive.

$$D_j = (\alpha_j, \beta_j, \gamma_j, \lambda_j, \pi_j) \quad (5)$$

The initial component of the proposed system is the predictive analytics, which predicts demand of the workload based on the historical traces and contextual indicators. Future load $L(t)$ is estimated by using time-series forecasting models and learning-based regression models. Where $x(t)$ is the workload arrivals, at time t , then the predicted demand is $\hat{x}(t + \Delta t)$.

$$\hat{x}(t + \Delta t) = f(x(t), x(t - 1), \dots, x(t - p)) \quad (8)$$

Here $f(\cdot)$ is a predictor trained by the process of learning, and p is any prior time-volume taken into consideration. Such a mechanism lets it be proactively orchestrated as opposed to being reactive.

The intelligent orchestration engine then calculates the most optimal workload-resource mapping, once the workload characteristics are predicted. This is an orchestration problem that is formulated like a constrained optimization function. It is targeted at reduction of the total execution cost and latency and meeting the governance, data locality, and resource constraints. Where x_{ij} refers to a binary decision variable that will show whether workload w_j will be assigned to node n_i . The objective function is expressed in the form of.

$$\text{Minimize } F = \sum_{i=1}^k \sum_{j=1}^m (\tau_{ij} + \phi_{ij} + \kappa_{ij}) x_{ij} \quad (7)$$

Here τ_{ij} is latency cost, ϕ_{ij} is both computation and energy cost, κ_{ij} policy and compliance constraint penalty.

Assuming that there is a resource capacity constraint.

$$\sum_{j=1}^m \alpha_j x_{ij} \leq C_i, \sum_{j=1}^m \beta_j x_{ij} \leq M_i, \sum_{j=1}^m \gamma_j x_{ij} \leq B_i \quad (8)$$

And compatibility of policy constraint

$$\pi_j \subseteq \Pi_i \quad (9)$$

Here Π_i represents the policy advocated by node n_i .

The orchestration tier continues engaging a policy cognizant governance controller which imposes data residency, privacy, lineage, and regulatory conformity restrictions. The directed acyclic graph $G = (V, E)$ represents data lineage with V being dataset, and E being transformation operations. A lineage preservation role.

$$L(v_a, v_b) = 1 \quad (10)$$

Means used to indicate traceability between original v_a and derivative v_b . This makes sure that there are transparency and readiness to audit distributed pipelines.

The behavior-adaptive workload scheduling system is an important part of the suggested strategy. The scheduler monitors the behavior of workload execution and dynamically modifies decisions without making use of static heuristics. Let $\theta_j(t)$ be the recorded state of workload w_j performance at a time t . The formulation of reinforcement learning is applied, whereby the scheduler picks an action a_t (including migration, rescheduling, scaling up/down), and gets a reward r_t depending on efficiency and compliance saturation. The policy parameters are updated using the learning process.

$$Q(s_t, a_t) \leftarrow Q(s_t, a_t) + \eta \left[r_t + \gamma \max_{a'} Q(s_{t+1}, a') - Q(s_t, a_t) \right] \quad (11)$$

Here s_t means the current state, η means the learning, and γ means the discount factor.

Automated resilience and self-healing are also present in the system. The probability of failure of a node n_i is p_i . The anticipated availability of services is

$$A = 1 - \prod_{i=1}^k p_i \quad (12)$$

In case of a fault, the workloads are switched to backup nodes with minimal interruption time. This is based on h and T_o where failure is announced when $h > T_o$. Recovery migration decision is an optimization of the type of orchestration formulation but restricted to live nodes. All functional layers are overlapped by a unified data intelligence layer. It combines quality assessment, semantic metadata management, and anomaly detection. The quality of data of set d is assessed as.

$$Q(d) = \omega_1 c + \omega_2 k + \omega_3 i + \omega_4 v \quad (13)$$

Here C may represent completeness, C consistency, I integrity, V validity, and W weight coefficients.

This is a seamless system that is a closed intelligence loop. Predictive components and decision-making optimization engines are fed by observational information created by metrics of runtime; constraints are imposed by governance modules and graphs find adaptable ways to control behavior by the schedulers. Therefore, architecture is developed in accordance with operating conditions rather than being fixed.

Algorithm for Intelligent Enterprise Cloud Distributed Framework

The algorithm determines the working process of the suggested intelligent enterprise cloud distributed system of the next-generation data engineering. It allows independent workload management, proactive coordination, control awareness, dynamical scheduling, and robust

performance even in a multi-cloud setting. The process will make sure that all workloads are smartly analysed, optimally positioned, constantly monitored, and dynamically handled whilst policy adherence and stable operations ensured.

1. Start the distributed cloud setup and claim all the compute, storage, and network resources in the participating nodes.
2. Extraction of the enterprise workloads and descriptive workload profile including computational intensity, demandingness of the memory, I/O behaviour, latency sensitivity, and governance constraint are built.
3. Maintain historical traces of workload as the basis of predictive analytics and changing intelligence.
4. Appeal to the predictive modeling layer to predict the size of future workloads, load levels on the resources and potential changes using historical templates and situational indices.
5. Establish resource distribution frameworks (temporarily) based on its expected workload requirement and actual capacity with respect to distributed infrastructure.
6. Appeal to the intelligent orchestration engine to develop workload-to-resource mapping based on optimization logic with minimization of latency, execution cost, and policy penalties.
7. Authenticate all the orchestration-based decisions using the governance controller to clarify adherence to data residency, privacy demands, lineage limitations as well as enterprise regulation requirements.
8. Send workloads to the targeted nodes and start distributive execution by employing coordinated monitoring systems.
9. Facilitate the investigation of the continuous runtime behavior, whereby system monitors can assess latency behavior and throughput consistency, workload deviation, and compliance state on the fly.
10. Enable the adaptive scheduling layer to dynamically adaptation behavior through learning-based decision making in case there are deviations, performance bottlenecks, or policy issues.
11. Intelligent response to the observed operational variations by triggering corrective measures including workload re-scheduling, migration, scaling, or re-balancing.
12. Track infrastructure resilience Metrics Monitor node health, failure rates, and anomaly signals with heartbeat validation as well as system health analytics.
13. Activate independent self-healing if the failures of nodes/node degradation are observed, which means moving active workloads to backup nodes with the minimum disruption.
14. Ensure cohesive data intelligence which must be regularly updated to metadata, lineage graphs, and quality attributes to ensure transparency, auditability, and trust.
15. The execution logs of the feed, performance feedback, governance, and learning outputs feedback to predictive, orchestration, and scheduling elements, which facilitate unending intelligence evolution.
16. Repeat monitoring-learning-optimization until you enable adaptive, policy aligned and intelligent management of enterprise cloud.

The algorithm provides a formalized, intelligent, and autonomously controlled workflow of enterprise-scale distributed clouds. It becomes able to make data engineering workloads run in an efficient, secure, and intelligent manner in dynamic conditions of the enterprises by applying predictive analytics, orchestration through optimization, adaptive scheduling, compliance governed, and self-healing resilience. It is the fundamental functional engine of the envisioned intelligent enterprise cloud distributed structure.

The approach suggested would create an all-intelligent, integrated, and governance suited enterprise cloud distributed framework to be used in next-generation data engineering ecosystems. The framework transforms the passive-elastic platforms of cloud systems into active decision-oriented infrastructures via predictive analytics, optimization-led orchestration, flexible scheduling, cohesive data intelligence, and autonomous resilience. The architecture is not reduced to data processing on scale but it reason about the workloads, policies and changing situations, creating a polished basis on intelligent enterprise cloud distributed systems.

4. EXPERIMENTAL RESULTS AND ANALYSIS

The performance of intelligent enterprise cloud distributed systems must be assessed using multidimensional analysis since the performance involves more than throughput but latency, scalability, fault tolerance and resource utilization efficiency and adherence to compliance robustness. The interpretation of results is made across these perspectives to comprehend the appropriateness of the architecture to the next-generation data engineering workloads. The most common focus of experiments involves heterogeneous work load conditions, hybrid batch stream pipelines, changing resource availability, and multi-cloud deployment situations.

Performance Metrics

The outcomes are based on a rich system of metrics such that computational efficiency as well as operational intelligence are determined precisely.

Throughput (TH) measures the number of useful workloads handled by unit time. Assuming that J is the cumulative number of jobs done and T is the cumulative time of execution, throughput is described as

$$TP = \frac{J}{T} \quad (14)$$

Here J is the number of complete workloads or tasks, T is a total time of observation.

Average response time (ART) refers to time that the operating system takes between workload submission and the initial response of the execution meaning fulfilled.

$$ART = \frac{1}{n} \sum_{i=1}^n (t_{r_i} - t_{s_i}) \quad (15)$$

Here n is number of jobs, t_{r_i} is response time of job i, t_{s_i} is submission time of job i.

Makespan (MS) is an evaluation of the overall completion time of all jobs in a distributed environment.

$$MS = \max_{i=1}^n (C_i) \quad (16)$$

Here C_i means completion time of job i C_{max} the maximum completion time of all tasks.

Resource Utilization Efficiency (RUE) is a measure of productive use of the available resources.

$$RUE = \frac{R_{used}}{R_{total}} \times 100 \quad (17)$$

Where R_{used} is real CPU -memory-bandwidth resource used, R_{total} is cumulative provisioned resource capacity.

Fault Tolerance Success Rate (FTSR) measures health check-ups in recovering faults or failures that occur to the node.

$$FTSR = \frac{F_s}{F_t} \times 100 \quad (18)$$

Here F_s is effectively managed faults, F_t is all faults that happen during execution.

Service-Level Agreement Satisfaction (SLAS) includes the perception of percentage of workloads against preset performance guarantees like latency or uptime performance targets.

$$SLAS = \frac{N_{sat}}{N_{tot}} \times 100 \quad (19)$$

Here N_{sat} is the number of tasks executable by SLA constraints, N_{tot} is the number of tasks executed.

Energy Efficiency (EE) is used to analyze useful computational work per unit of energy used.

$$EE = \frac{J}{E} \quad (20)$$

Here J is total number of jobs successfully carried out; E is total amount of energy used.

Scalability index (SI) is used to test how well a system can ensure that performance is not compromised as the load is increased.

$$SI = \frac{TP_{scaled}}{TP_{baseline}} \times 100 \quad (21)$$

Here TP_{scaled} is the throughput, post work load increase and $TP_{baseline}$ is throughput at the baseline.

Compliance Assurance Score (CAS) comprises of the percentage of workloads that remain secure, with privacy, governance policies, and data residency rules.

$$CAS = \frac{N_{comp}}{N_{tot}} \times 100 \quad (22)$$

Here N_{comp} is the number of compliant operations, N_{tot} is the number of operations completed.

Data Quality Preservation Index (DQPI) means that data integrity, consistency, validity as well as lineage are maintained during distributed processing.

$$DQPI = \frac{Q_{final}}{Q_{initial}} \times 100 \quad (23)$$

Here $Q_{initial}$ is initial quality score aggregated, Q_{final} is final quality score after processing.

Table 2: Performance Comparison Based on Resource Utilization, Fault Tolerance, and SLA Satisfaction

Approach	RUE (%)	FTSR (%)	SLAS (%)
CCS	63	72	76
SRA	66	75	78
HLB	70	80	82
RLS	76	86	88
PMCM	81	88	90
SHDF	84	92	93
Proposed (IECDF)	89	97	98

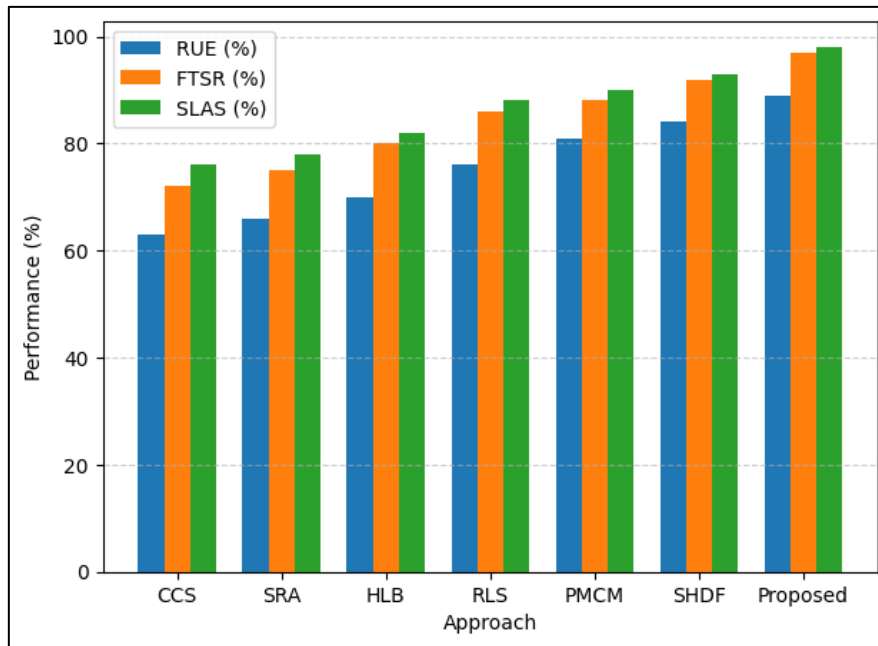


Figure 3: Illustration of compared RUE, FTSR, SLAS

The Table 2 and Figure 3 are the comparisons of seven cloud scheduling/management techniques based on three main metrics: Resource Utilization Efficiency (RUE), Fault Tolerance Success Rate (FTSR) and Service Level Agreement Satisfaction (SLAS). Traditional models such as CCS and SRA portray reasonable efficiency and reliability whereas non-heuristic and learning-based modeling models such as HLB and RS reveal significant progress. Self-discovering and policy-conscious frameworks also make themselves even more robust and compliant. The suggested IECDF is far better than any current methods, showing better flexibility, resiliency, management guarantee, and reliable business functioning ability.

Table 3: Evaluation of Scalability, Compliance Assurance, and Data Quality Preservation Across Approaches

Approach	SI (%)	CAS (%)	DQPI (%)
CCS	62	65	78
SRA	67	68	81
HLB	73	73	84
RLS	81	82	88
PMCM	86	91	92
SHDF	92	94	95
Proposed (IECDF)	97	99	99

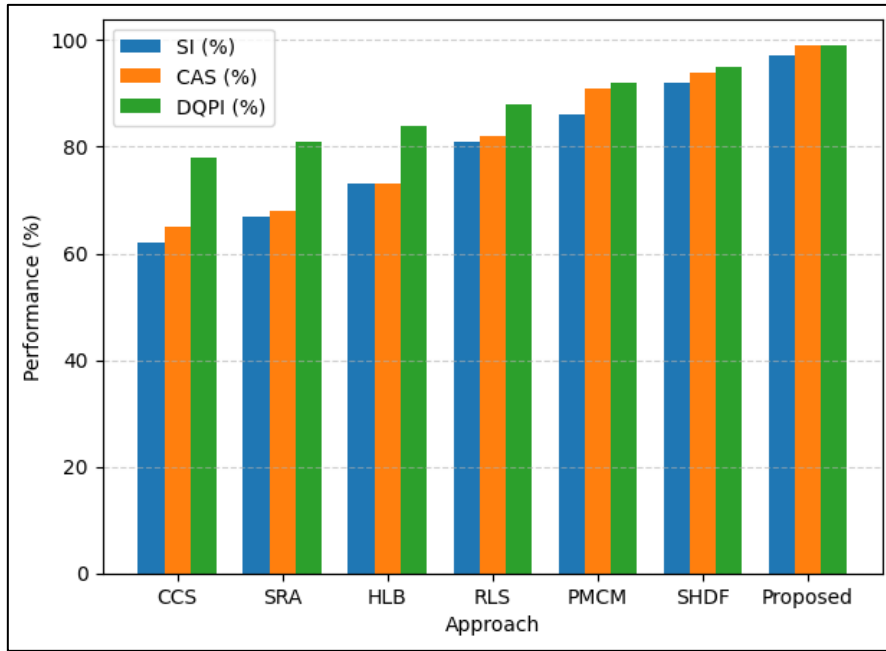


Figure 4: Illustration of compared SI, CAS, DQPI

Table 3 and Figure 4 are the comparisons of seven approaches based on Scalability index (SI), Compliance Assurance Score (CAS), and Data Quality Preservation Index (DQPI). The classical methods like CCS and SRA exhibit a low level of scale extension and moderate compliance with the deviant models like HLB and RLS exhibiting a sign of improvement. Self-healing and policy-conscious structures assure much greater trustworthiness and data integrity. The proposed IECDF is the best in all the metrics which signifies that it has high scalability, high governance fit and high capability of ensuring data integrity in complex enterprise cloud environments.

Table 4: Energy Efficiency Comparison, Throughput, Makespan, and Average Response Time Comparison Across Approaches

Approach	EE (jobs/kWh)	TP (jobs/s)	MS (s)	ART (ms)
CCS	210	140	310	480
SRA	230	155	295	440
HLB	255	178	270	390
RLS	280	195	240	335
PMCM	305	210	225	310
SHDF	330	225	210	280
Proposed (IECDF)	365	250	180	230

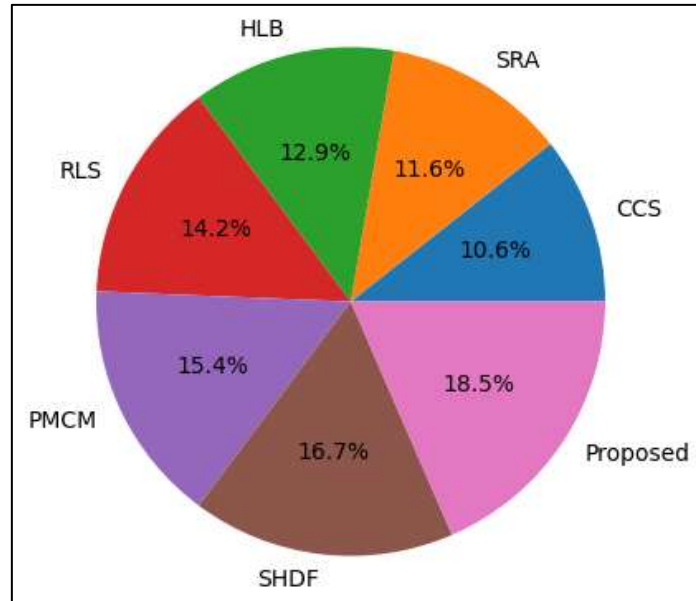


Figure 5: Illustration of compared Energy Efficiency

Figure 5 and Table 4 compare energy efficiency in approaches varied by the number of jobs per kilo Watt. Conventional models have average performance and heuristic and learning systems have enhanced performance. Structures that are policy conscious and self-healing are more efficient and the proposed IECDF is the most energy efficient.

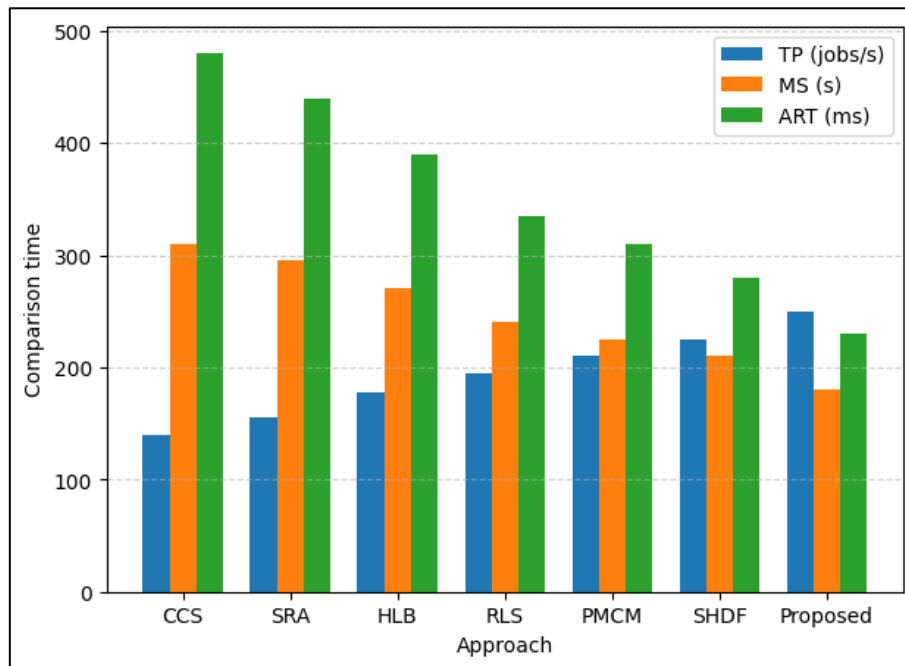


Figure 6: Illustration of compared TP, MS, ART

The Table 4 and the Figure 6 compare seven approaches that are based on Throughput (TP), Makespan (MS), and Average Response Time (ART). The conventional techniques including CCS and SRA are less throughput with more latency, implying low processing capacity. Learning-based and heuristic methods, such as HLB and RS, allow increasing the speed and responsiveness. Self-aware and policy-conscious frameworks can also minimize the completion time and enhance execution stability. This is because the proposed IECDF has high

throughput, and much lower makespan, and response time, which is the best when it comes to efficiency, processing ability, and response to enterprise distributed workload.

The results discussed show that the assessment of enterprise cloud distributed systems needs coherent review of various performance dimensions such as latency, throughput, fault tolerance, utilization efficiency, and SLA satisfaction. The benefits are systemic as advanced methods with predictive analytics, adaptive timing, governance awareness, and resilience mechanisms enjoy systemic advantages over the older models orchestrated as being static. These remarks reaffirm the necessity of intelligent autonomously administered policy conforming frameworks of next-generation data engineering setups in line with the general incentive of intelligent enterprise cloud distributed systems.

5. CONCLUSION AND FUTURE SCOPE

The paper outlines that to enable successful next-generation data engineering environments (large scale, heterogeneous, dynamically changing workloads), intelligent enterprise cloud distributed systems are essential. Conventionally designed architectures are not robust enough to meet high demands of autonomous orchestration, adaptability with decision-making, governance compliance, real-time responsiveness, and resiliency demands. The suggested idea framework is a prediction engine, smart orchestration, adaptive workload scheduling, a single data intelligence, and autonomous resilience as part of an attractive operational ecosystem and not individual functionalities. The architecture sustains good use of distributed resources and supports compliance, transparency, and operational stability; it makes sure that policy awareness is system wise and that the system does not violate existing business governance requirements. The design also builds upon system resilience by means of self-healing, proactive optimization, and life-long learning, and is a powerful basis of sustainable enterprise computing. In general, the work represents a progressive architectural course that converts cloud environments as the passive execution platform to an active, intelligent, and governance-capable inference capable of providing mission-critical, real-time, and data-intensive enterprise operations.

Future research pathways could include more expansive realisation of federated intelligence, autonomous trust, energy-sensitive cloud sustainability designs, edge-cloud collaborative learning and self-evolving orchestration strategies altogether in order to increase further adaptability, governance assurance, and enterprise cloud resilience over the long term.

REFERENCE

- [1] W. Liang, M. Tang, J. Long, X. Peng, J. Xu, and K.-C. Li, "A secure fabric blockchain-based data transmission technique for industrial Internetof-Things," *IEEE Trans. Ind. Informat.*, vol. 15, no. 6, pp. 3582–3592, Jun. 2019.
- [2] J. Navarro-Ortiz, P. Romero-Diaz, S. Sendra, P. Ameigeiras, J. J. Ramos-Munoz, and J. M. Lopez-Soler, "A survey on 5G usage scenarios and traffic models," *IEEE Commun. Surveys Tuts.*, vol. 22, no. 2, pp. 905–929, 2nd Quart., 2020.
- [3] R. Anil, G. Capan, I. Drost-Fromm, T. Dunning, E. Friedman, T. Grant, S. Quinn, P. Ranjan, S. Schelter, and O. " Yilmazeł, Apache mahout: Machine learning on distributed dataflow systems, *J. Mach. Learn. Res.*, vol. 21, no. 127, pp. 1–6, 2020.
- [4] P. Chaignon, D. Adjavon, K. Lazri, J. François, and O. Festor, "Offloading security services to the cloud infrastructure," in *Proc. Workshop Secur. Softwarized Netw., Prospects Challenges (SecSoN)*, New York, NY, USA, 2018, pp. 27–32.
- [5] E. Afgan et al., "The Galaxy platform for accessible, reproducible, and collaborative biomedical analyses: 2018 update," *Nucleic Acids Res.*, vol. 46, no. W1, pp. W537–W544, 2018.
- [6] M. Urbina, T. Acosta, J. Lázaro, A. Astarloa, and U. Bidarte, "Smart sensor: SoC architecture for the industrial Internet of Things," *IEEE Internet Things J.*, vol. 6, no. 4, pp. 6567–6577, Aug. 2019.
- [7] A. Zappone, M. Di Renzo, and M. Debbah, "Wireless networks design in the era of deep learning: Model-based, AI-based, or both?" *IEEE Trans. Commun.*, vol. 67, no. 10, pp. 7331–7376, Oct. 2019.
- [8] F. Hueske and V. Kalavri, *Stream Processing with Apache Flink: Fundamentals, Implementation, and Operation of Streaming Applications*. Sebastopol, CA, USA: O'Reilly Media, 2019.
- [9] I. Sechopoulos, J. Teuwen, and R. Mann, "Artificial intelligence for breast cancer detection in mammography and digital breast tomosynthesis: State of the art," *Seminars Cancer Biol.*, vol. 72, pp. 214–225, Jul. 2021.
- [10] Z. N. Rashid, S. R. Zeebaree, M. A. Sadeeq, R. R. Zebari, H. M. Shukur, and A. Alkhayyat, "Cloud-based Parallel Computing System Via Single-Client Multi-Hash Single-Server Multi-Thread," in *2021 International Conference on Advance of Sustainable Engineering and its Application (ICASEA)*, 2021, pp. 59–64.
- [11] W. H. Halabi, D. N. Smith, J. C. Hill, J. W. Anderson, K. E. Kennedy, B. M. Posey, L. B. Ngo, and A. W. Apon, "Viability of Azure IoT Hub for processing high velocity large scale IoT data," in *Proc. Companion ACM/SPEC Int. Conf. Perform. Eng.* New York, NY, USA: Association for Computing Machinery, 2021, pp. 73–76.
- [12] J. Lopez and J. E. Rubio, "Access control for cyber-physical systems interconnected to the cloud," *Comput. Netw.*, vol. 134, pp. 46–54, Apr. 2018.
- [13] M. Usama, J. Qadir, A. Raza, H. Arif, K.-L.-A. Yau, Y. Elkhatib, A. Hussain, and A. Al-Fuqaha, "Unsupervised machine learning for networking: Techniques, applications and research challenges," *IEEE Access*, vol. 7, pp. 65579–65615, 2019.

- [14] Y. Benlachmi and M. L. Hasnaoui, Big data and spark: Comparison with hadoop, in Proc. 2020 Fourth World Conf. Smart Trends in Systems, Security and Sustainability (WorldS4), London, UK, 2020, pp. 811–817.
- [15] F. S. Ahmad, L. Ali, Raza-Ul-Mustafa, H. A. Khattak, T. Hameed, I. Wajahat, S. Kadry, and S. A. C. Bukhari, “A hybrid machine learning framework to predict mortality in paralytic ileus patients using electronic health records (EHRs),” *J. Ambient Intell. Humanized Comput.*, vol. 12, no. 3, pp. 3283–3293, Mar. 2021.
- [16] Y. Turk and E. Zeydan, “Satellite backhauling for next generation cellular networks: Challenges and opportunities,” *IEEE Commun. Mag.*, vol. 57, no. 12, pp. 52–57, Dec. 2019.
- [17] E. C. Strinati, S. Barbarossa, J. L. Gonzalez-Jimenez, D. Ktenas, N. Cassiau, L. Maret, and C. Dehos, “6G: The next frontier: From holographic messaging to artificial intelligence using subterahertz and visible light communication,” *IEEE Veh. Technol. Mag.*, vol. 14, no. 3, pp. 42–50, Sep. 2019.
- [18] L. Calcote and Z. Butcher, *Istio: Up and Running: Using a Service Mesh to Connect, Secure, Control, and Observe*. Sebastopol, CA, USA: O’Reilly Media, 2019.
- [19] H. Zahid, T. Mahmood, A. Morshed, and T. Sellis, “Big data analytics in telecommunications: Literature review and architecture recommendations,” *IEEE/CAA J. Autom. Sinica*, vol. 7, no. 1, pp. 18–38, Jan. 2020.
- [20] P. S. Janardhanan and P. Samuel, Launch overheads of spark applications on standalone and hadoop YARN clusters, in *Advances in Electrical and Computer Technologies*, T. Sengodan, M. Murugappan, and S. Misra, eds. Singapore: Springer, 2020, pp. 47–54.
- [21] A. Vaid, S. K. Jaladanki, J. Xu, S. Teng, A. Kumar, S. Lee, S. Somani, I. Paranjpe, J. K. De Freitas, and T. Wanyan, “Federated learning of electronic health records improves mortality prediction in patients hospitalized with COVID-19,” *MedRxiv*, vol. 1, no. 9, pp. 1–21, Aug. 2020.
- [22] P. Y. Abdullah, S. Zeebaree, H. M. Shukur, and K. Jacksi, “HRM system using cloud computing for Small and Medium Enterprises (SMEs),” *Technology Reports of Kansai University*, vol. 62, no. 04, p. 04, 2020.
- [23] L. Calcote and Z. Butcher, *Istio: Up and Running: Using a Service Mesh to Connect, Secure, Control, and Observe*. Sebastopol, CA, USA: O’Reilly Media, 2019.